



HOPKINS CENTER
FOR THE ARTS

present



Dartmouth
Department
of Theater

Eclipsed

By Danai Gurira

Miranda Haymon, director
Michael Ganio, scenic designer
Laurie Churba, costume designer
Dan Kotlowitz, lighting designer
Sinan Zafar, sound designer
Catherine Darragh '13, stage manager

Eclipsed was originally produced in August 2009 by Woolly Mammoth Theatre Company, Washington DC, (Howard Shalwitz, Artistic Director; Jeffrey Herrmann, Managing Director).

Eclipsed was developed with the support of McCarter Theater, Princeton, New Jersey (Emily Mann, Artistic Director) and developed by the Ojai Playwrights Conference (Robert Egan, Artistic Director).

Eclipsed is presented by special arrangement with Dramatists Play Service, Inc., New York.

This performance and related programming are made possible in part through generous support from the Adams Family Fund, Dorothy M. Byrne, Drew Dudley 1933 Memorial Endowment, the Michael Ellis 1939 Fund, the George E. Frankel 1931 Fund, the Frank L. Harrington 1924 Fund No. 4, the Jeanette and Robert Latta Fund, the Goddard Lieberon Memorial Fund, the Samuel C. Harned 1952 Student Theater Production Fund, and the A. Robert Towbin 1957 Fund.

Fri & Sat • November 2 & 3 • 8 pm

Thu–Sat • November 8–10 • 8 pm

Sun • November 4 & 11 • 2 pm

2018 • The Moore Theater • Dartmouth College

RELATED FREE PUBLIC EVENTS

Opening Night Reception

Please join us for a celebratory reception in the Top of the Hop following the show on Friday, November 2. Cash bar available, courtesy of the Top of the Hop Lobby Bar. This event is generously supported by the Hopkins Center and the Adams Family Fund for Theater.

Pre-Show Talk: Black Womanhood on the World Stage

Join *Eclipsed* director Miranda Haymon and Dr. Monica White Ndounou of the Department of Theater for a conversation at 7 pm on Saturday, November 3, in the Top of the Hop. Moderated by Laura Edmondson, chair of the Department of Theater. Free and open to the public.

Post-Performance Discussion

You are invited to remain in the theater immediately following the performance on Friday, November 9, for an informal discussion with Laura Edmondson and members of the cast.

Cast

HelenaNaomi Agnew '20
Bessie Esther Oluokun '20
The Girl.....Stella Asa '22
MaimaStephanie Everett '19
Rita..... Michaela Benton '22

Setting:

Liberia: Bomi County, a LURD rebel army camp, 2003.

There will be one fifteen-minute intermission.

Director's Note

Eclipsed takes place in a bullet-ridden one room shack that serves as an army camp for the rebel group called Liberians United for Reconciliation and Democracy (LURD), which aimed to depose Charles Taylor, the then-president of Liberia. Our screens and newspapers always tell us about war in Africa, but we never hear about how women navigate and survive these conflict zones. The world we've actualized on stage is sprung from an extensive research process undertaken by the playwright, and thus, our team.

Every designer, every actor has been changed by this immersion. We invite you, our audience, to take the same leap. Watch the documentaries, read the articles, listen to the news reports. By taking this leap together, we are giving their stories a platform, honoring their individual identities, and allowing their eclipsed light a full, though fleeting, chance to shine.

Miranda Haymon

Production Team

Director of Theater.....	Jamie Horton
Production Manager	Jennifer Collins Hard
Technical Director	Jason Merwin
Assistant Technical Director/Master Carpenter.....	Scott Henkels
Master Electrician	Janine Woods Thoma
Costume Shop Manager.....	Jennifer Bilbo
Master Dyer/Stitcher	Joan Morris
Cutter/Draper	Anna Winter
Stage Management Advisor.....	Kathleen Cunneen
Department Administrator	Maggie Devine-Sullivan
Academic Assistant	Milena Zuccotti
Assistant Lighting Designer.....	Jonathan Briffault '21
Assistant to the Scenic Designer	Cameron Buxton '19
Assistant Stage Managers	Hannah Haile '20, Eleanor Mitchell '20, Gabrielle Mitchell '22, Lexi Warden '21
Dialect Coach	Lynnette Freeman
Fight Choreographer.....	Paul West
Props Manager	Cameron Buxton '19
Company Representative.....	Stephanie Everett '19
Audio Engineer	Jean-Louis Thauvin
Costume and Wardrobe Crew.....	Abigail Drach '20, Anne Furman '19, Ava Giglio '19, Sara Lockwood '22, Millenah Nascimento '21, Esther Oluokun '20, Linh Vuong '22
Scenic, Prop, and Lighting Crew	Jonathan Briffault '21, Makale Camara '21, Helene Kim '21, Talia Pikounis '22, Rory Schadler '21, Evan Schafer '22, Will Maresco '19, students in THEA 40 (Technical Production)*
Light Board Operator.....	Brandy Zhang '22
Sound Board Operator	Isabel Wallace '21
Back Stage Crew	Robert Alter '21, Nitesh Pant '22
Theater Office Worker.....	Kelleen Moriarty '19

*Students in THEA 40 (Technical Production)..... Robert Alter '21, Kate Budney '21,
Ajaipal Chanhal '20, Edward Darling '19, Stephanie Everett '19,
Brooke Goldner '19, Nicholas Gutierrez '20, Matthew Haughey '21,
Eleanor Mitchell '20, Armando Ortiz '19, Nitesh Pant '22,
James Patrick '19, Davin Polk '19, William Roussell '20,
Anuj Varma '20, Isabel Wallace '21, Spring Yu '19, Brandy Zhang '22

Special Thanks

Arielle E. Isedenu '22 and Arthur F. Mensah '19
Dry Cleaning by Roger's Fabricare, Servicing Carpet King & Tile, Norwich, VT

About the Creative Team

Miranda Haymon (director) is a Princess Grace Award/Honoraria-winning director and curator of performance originally from Boston, Massachusetts. She is an Artist-in-Residence at New York's Roundabout Theatre Company, where she was previously the 2017/18 Directing Fellow and is currently the Artistic Development Associate. She is a New Georges Affiliate Artist, member of the Lincoln Center Theatre Directors Lab and the Wingspace Mentorship Program. She is currently a Manhattan Theatre Club Directing Fellow, and formerly an Allen Lee Hughes Directing Fellow at Arena Stage. She is a graduate of Wesleyan University where she majored in both German Studies and Theater and was awarded the Rachel Henderson Theater Prize in Directing. www.mirandahaymon.com

Michael Ganio (scenic designer) recently joined the faculty at Dartmouth while maintaining an active professional career in the American theatre. Most recently he designed Leonard Bernstein's opera *Candide* for the Clarence Brown Theatre in association with the Knoxville Symphony Orchestra, *Exit the King* for American Players Theatre, and *A Christmas Story* for The Repertory Theatre of Saint Louis. In January he will be making his New York City debut at 59E59 Street designing *Trick or Treat* with Northern Stage, and will follow with a production of *Oslo* in Saint Louis. His work has been seen nationally at Milwaukee Repertory, The Denver Center, The Center Theatre Group, Chicago Opera Theatre, and Portland Opera, among other American performing arts companies.

Laurie Churba (costume designer) has worked extensively in New York City and throughout the regional theater circuit as a costume designer in theatre, television, and film for over twenty-four years. She was on the design team at *Saturday Night Live* for eleven seasons where she designed costumes for live skits, commercial parodies, short films, and

celebrity photo shoots. She has also designed various independent films. Broadway: *The Price*. Regional theaters: Mark Taper Forum, Huntington Theater, Old Globe, Williamstown Theater Festival, Berkshire Theater Festival, Arena Stage, Syracuse Stage, Geva Theater, Westport Country Playhouse, Pittsburgh Public Theater, Goodspeed Opera House, Northern Stage. She serves as faculty costume designer and associate professor in Dartmouth's Department of Theater.

Dan Kotlowitz (lighting designer), the Leon E. Williams Professor of Theater, was chair of the Theater Department from 2011–2016, and Director of Theater from 2003–2011. He has also been a Melville Strauss and Petit Family Fellow. In 2008 he was awarded the John M. Manley Huntington Memorial Award for outstanding teaching and research. He has designed lights for over 250 professional productions in New York and at regional theaters across the country, most recently *Macbeth* and *Heisenberg* at Shakespeare and Company, *Petrified Forest* at Berkshire Theatre Group, and *Matilda* at Northern Stage. His design work for performance artist Diamanda Galas has been seen nationally and internationally. At Dartmouth, he teaches Lighting Design, Composition and Design, and Creativity and Collaboration.

Sinan Zafar (sound designer) is a New York-based sound designer and composer. His work includes *What the Constitution Means to Me* (Woolly Mammoth+, New York Theatre Workshop, Berkeley Rep, Clubbed Thumb); *peerless* (Yale Repertory Theater); *Jump* (Playmakers Rep); *Hamlet* (Waterwell); *Richard in 9 Poses* (Clubbed Thumb); *The Wolves*, *The Legend of Georgia McBride*, *Intimate Apparel*, *Detroit*, *The Champion* (TheatreSquared); *Midsummer* (Tiltyard). He is a member of Wingspace Theatrical Design, holds an MFA from the Yale School of Drama and a BA in Drama with honors in sound design from the University of California, Irvine. sinanzafar.com

About the Creative Team continued

Catherine Darragh (stage manager) is a graduate of Dartmouth's Class of 2013 who majored in both Classical Archeology and Theater and won the David Birney Award for Excellence in the Theater Arts. During the 2014/2015 season, she apprenticed at the Penobscot Theater Company in Bangor, Maine. She subsequently served as Production Manager, Stage Manager, and Technical Instructor

for Penobscot Theatre's 2015 Summer Dramatic Academy, working with children aged four to twenty. She then moved to southern Maine for a few years to work at culinary/event start-up O'Maine Studios while getting an MBA at the University of Southern Maine, and now is the Events and Summer Programs Manager for Conferences and Events at Dartmouth.

Department of Theater Faculty and Staff

Peter Hackett, *Avalon Foundation Professor in the Humanities*

Daniel Kotlowitz, *Leon E. Williams Professor of Theater*

Laura Edmondson, *Associate Professor of Theater, Chair*

Jamie Horton, *Associate Professor of Theater, Director of Theater*

Laurie Churba, *Associate Professor of Theater*

Monica White Ndounou, *Associate Professor of Theater*

Mara B. Sabinson, *Associate Professor of Theater*

Michael Ganio, *Assistant Professor of Theater*

Woon-Ping Chin, *Visiting Professor of Theater*

Carol Dunne, *Senior Lecturer*

James Goodwin Rice, *Senior Lecturer*

Joseph Sutton, *Senior Lecturer*

Keith Coughlin, *Lecturer*

Kathleen Cunneen, *Lecturer, Stage Management Advisor*

Melinda Evans, *Lecturer*

Jennifer Collins Hard, *Lecturer, Production Manager*

John J. Heginbotham, *Lecturer*

Kellen L. Hoxworth, *Lecturer and Mellon Postdoctoral Fellow*

Christian Kohn, *Lecturer*

Jason Merwin, *Lecturer, Technical Director*

Rebecca Stenn, *Lecturer*

Scott Henkels, *Assistant Technical Director/Master Carpenter*

Janine Woods Thoma, *Master Electrician*

Jennifer Bilbo, *Costume Shop Manager*

Joan Morris, *Master Dyer/Stitcher*

Anna Winter, *Cutter/Draper*

Maggie Devine-Sullivan, *Department Administrator, Theater/Hopkins Center*

Milena Zuccotti, *Academic Assistant, Theater/Hopkins Center*

Upcoming Department of Theater Productions



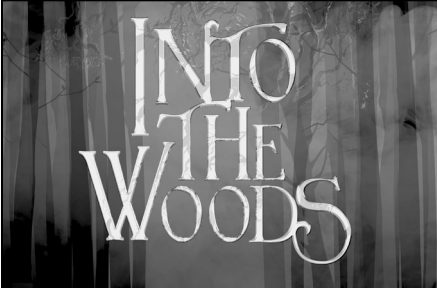
Tragedy: a tragedy by Will Eno

A student production directed by Owen P. O'Leary '19

Fri & Sat • November 9 & 10 • 8 pm

Sun • November 11 • 2 pm

Four newscasters reckon with the possibility of endless night.



Winter Mainstage Production

Into the Woods

by James Lapine and Stephen Sondheim

Keith Coughlin, director and choreographer

February 22–March 3



For tickets or more info, call the Box Office at 603.646.2422 or visit hop.dartmouth.edu. Share your experiences! #HopkinsCenter

Hopkins Center Directorate

Mary Lou Aleskie, Howard L. Gilman '44 Director

Michael Bodel, Director of External Affairs

Joshua Price Kol '93, Managing Director/Executive Producer

Jan Sillery, Director of Financial and Administrative Operations

Sydney Stowe, Director of Hopkins Center Film

Hopkins Center Board of Advisors

Anne Fleischli Blackburn '91

Kenneth L. Burns H'93

Barbara J. Couch

Rachel Dratch '88

Lizanne Fontaine '77 P'04, '09

Allan H. Glick '60, Tu'61, P'88, GP'19

Barry Grove '73

Caroline Diamond Harrison '86, P'16, '18,

Chair of the Board

Kelly Fowler Hunter '83, Tu'88, P'13, '15, '19

Robert H. Manegold '75, P'02, '06

Michael A. Marriott '84, P'18

Nini Meyer P'22

Hilary Edson Polk P'19

Hilary Spaulding Richards '92

Laurel J. Richie '81, Trustee Representative

Sharon Washington '81



Please turn off your cell phone inside the theater.



Assistive Listening Devices available in the lobby.



If you do not wish to keep your playbill, please discard it in the recycling bin provided in the lobby. Thank you.